

**Technical
Workshops**
Syuzanna Zakharova

Freedom to
Explore

Technical Workshops

- Futrix 6 New Feature Deployment
- Static Publisher and Futrix Power Admin
- Performance Improvement & Customization

Futrix 6 New Feature Deployment

Futrix 6.0 New Features

- o Spatial dimensions
- o SAS Stored process integration
- o Improved Cube Building
- o Personal Alerts & Alert Processing

Spatial Dimensions

Geo Data

- X, Y coordinates
- Segment must be present
- ID of the area (to link to analysis data)
- IDs of any higher level geo dimensions

Dimension attribute (Misc 1 tab)

- Mapping dataset
- Mapping variable name

SAS Stored Process

- o Write a stored process
 - sassamples/stored_process_dashboard_sample.sas
- o Set up Stored process in SAS Management Console
- o Turn On SAS Metadata Server Integration
- o Add a Stored Process in SAS Stored Process Integration
- o Users can now include stored process in a dashboard (link to a cell that has “View Detail Data” turned on)

Improved Cube Building

- Applies to Indexed datasets or SAS OLAP cube with “Futrix Created Aggregates” option
- Build at least once in Futrix 6
- Add excludes based on last build
 - Exclude any sub-tables that didn’t decrease in size (to save time during build)
 - Exclude any sub-tables that were built from very small sub-tables (to reduce the number of unnecessary sub-tables)

Personal Alerts

- o Add Alert Processing Group
 - Specify URL for links
 - Add Alert Group, specify ID, email parameters
- o Edit Meta-item to link to an Alert Processing Group
- o Add emails for users in User Security
- o Users can add personal alerts
 - Have to use a “saved” viewpoint/dashboard
- o Administrator runs Alert Processing when data changes via a batch job
 - (sassamples/batch_process_alerts.sas)
- o Users get emails about their alerts

Personal Alert Email

From: syuzannazakharova@futrixws014.jtw.cz on behalf of Futrix Administrator [syuzanna.zakharova@futrix.com]
To: Administrator
Cc:
Subject: Futrix Alert

Active Alert: When profit is too low

- Menu Item: Car Sales
- User: Administrator
- Subject: Car
- Data Source: Car Sales

The following condition has been met:

- % Profit is less than 10.0% for Year=1997
- The actual value for % Profit is: (54.6%)

Click on the following link to take you directly to the dashboard/viewpoint:

[Car Sales](#)

Questions

Break

Static Publisher & Futrix Power Admin

Static Publisher

- o Dashboard support
- o Support for all new charts
- o Table of Contents in PDF
- o Multiple File Formats as a single task
- o Support for relative paths and macro resolution
- o Publishing multiple groups in parallel
 - (sassamples/batch_static_publishing.sas)
- o New HTML destination interface options

Futrix Power Admin

Performance

- Stored Cache
- Secondary Data Sources (SAS OLAP, Indexed Datasets, MDDDB, HOLAP)
 - Summary datasets do not require Power Admin
- Cube Optimization
- Dimension Lookup Tables

Futrix Power Admin - continued

Customization

- Custom Data Sources
- Custom Measures
- Dynamic Metadata Setup & Use
- External Custom User Database
- Custom Attributes for Metadata elements
- Custom Administration Menu Items
- Custom Handles
- Custom Commands
- Custom Preferences

Questions

Performance Improvement & Customization

Performance Improvement

Back end processing

- Indexed Datasets and OLAP cube with Futrix Created Aggregates improvements
- Stored cache in parallel
- Static reports in parallel

Run-time environment

- Indexed Datasets
- Stored Cache
- Local Cache
- Static reports
- Dimensions with pre-populated distinct values
- No Formatted Grouping

What is Formatted Grouping?

- It's a dimension attribute that controls whether the Format is applied during the query and aggregation process or only during rendering
- If the format actually performs “grouping” of unformatted values (i.e. more than one unformatted value translates into one formatted value), then Formatted Grouping has to be ON.

Example of Formatted Grouping

SAS Date (raw)	Date dimension formatted with "DATE"	"Month" dimension formatted with "MonName" format
14610	1 st January 2000	January
14976	1 st January 2001	January
14641	1 st February 2000	February
15007	1 st February 2001	February

Filter: MONTH = "January"

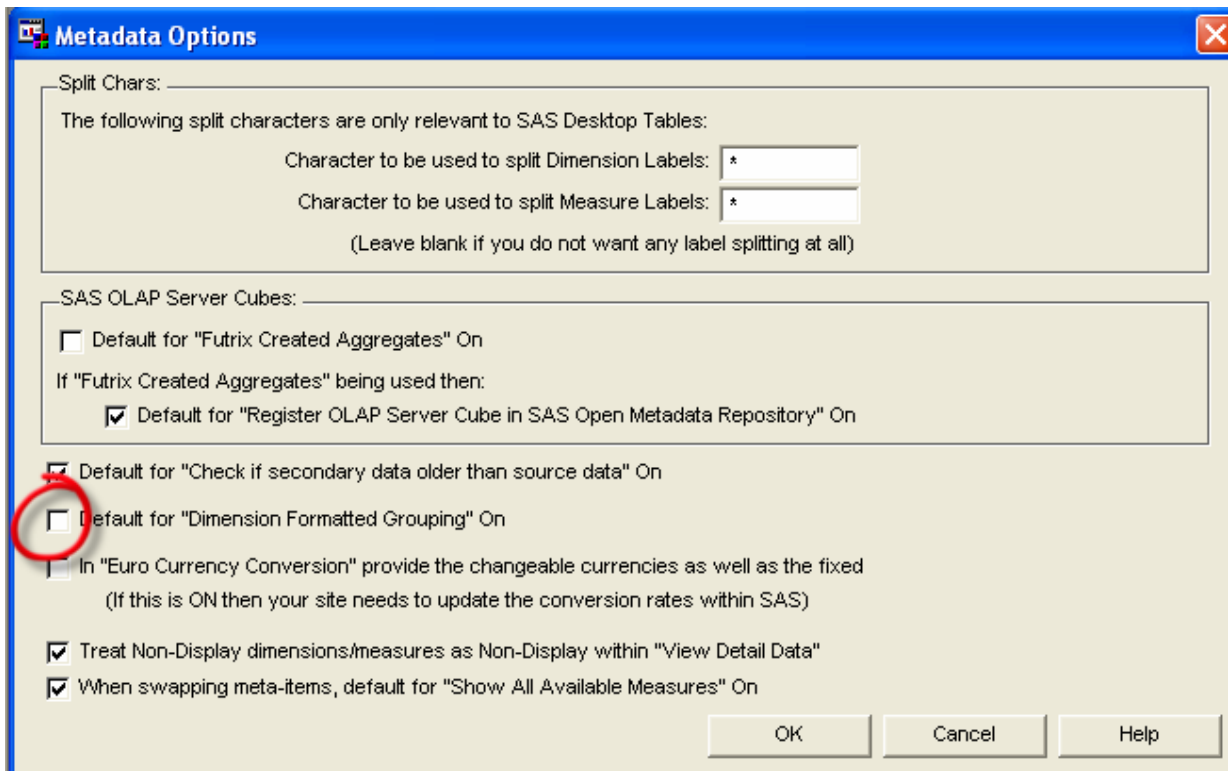
Query: where put(month, MonName.) = "January"

Why Not Formatted Grouping?

- o Enhanced performance during query when the dimension is used for filtering (indexes are used)
- o Certain filter operators (>, >=, <, <=, between, contains, starts with) can be performed without emulation, which requires an extra query
- o Filter independence from formatted value
- o Ability to specify multiple formats for the dimension
- o Ability to use filters with SPDE library for optimal query
- o No additional queries required to get sort order

Formatted Grouping Default

- Turn Off Default setting for Formatted Grouping (for new dimensions)



Metadata Options

Split Chars: _____
The following split characters are only relevant to SAS Desktop Tables:

Character to be used to split Dimension Labels: *

Character to be used to split Measure Labels: *

(Leave blank if you do not want any label splitting at all)

SAS OLAP Server Cubes: _____

Default for "Futrix Created Aggregates" On

If "Futrix Created Aggregates" being used then:

Default for "Register OLAP Server Cube in SAS Open Metadata Repository" On

Default for "Check if secondary data older than source data" On

Default for "Dimension Formatted Grouping" On

In "Euro Currency Conversion" provide the changeable currencies as well as the fixed
(If this is ON then your site needs to update the conversion rates within SAS)

Treat Non-Display dimensions/measures as Non-Display within "View Detail Data"

When swapping meta-items, default for "Show All Available Measures" On

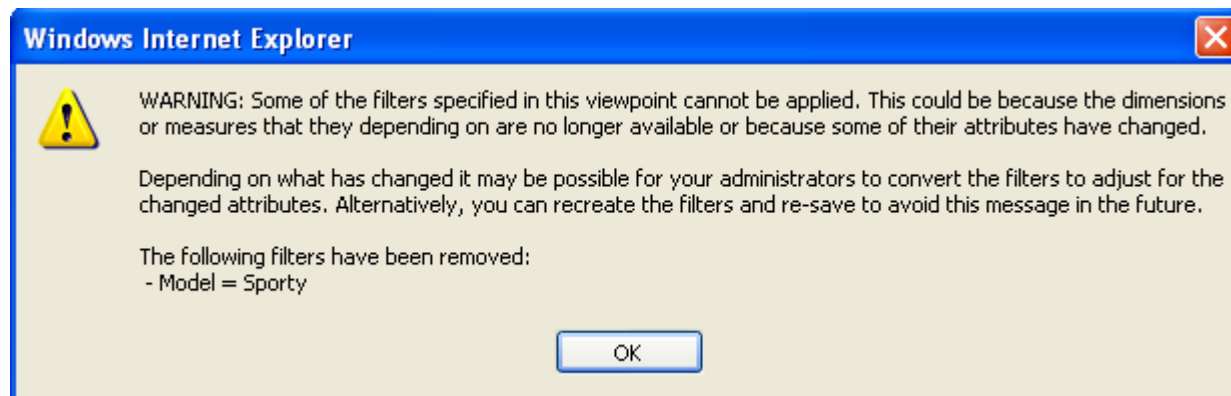
OK Cancel Help

Turning Off Formatted Grouping

- Ensure that existing dimensions do not have Formatted Grouping On unless they have to:
 - Formatted Grouping is only required if the Format specified for the dimension is not a 1-to-1 format or has an “Other” grouping
 - Consider changing the data and the format, so that can use 1-to-1 formats without “Other” grouping

Formatted Grouping & Filters

- If formatted grouping is turned off, existing filters will generate this error:



- User Formatted Grouping Change Management utility to convert existing filters

Questions

Break

Customizations

- o End User Interface configuration
- o Skin Customization
- o Custom Commands
- o Custom Handles
- o Example of a customization



Edit Custom Handles [-] [□] [✕]

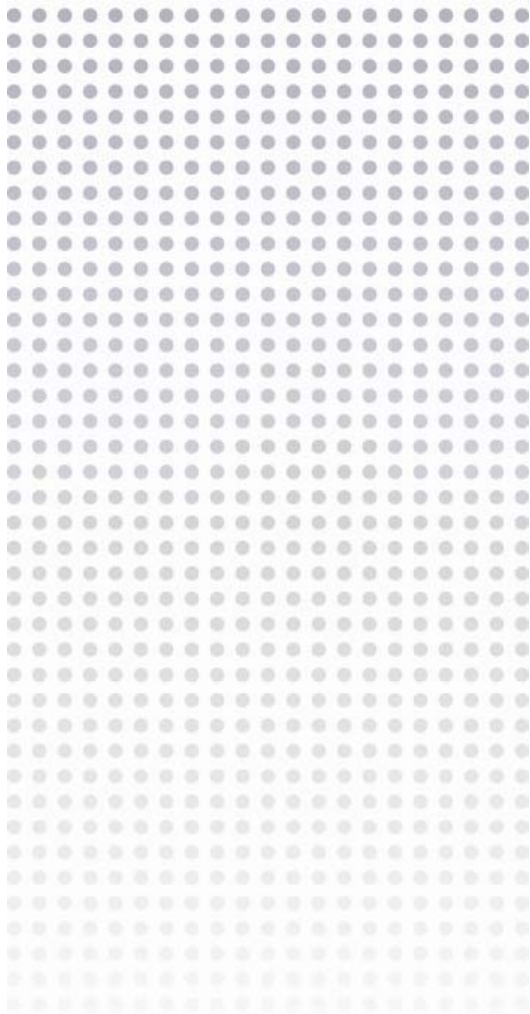
Handles available to link to your own methods: [Edit] [Make Inactive]

Handle	Status	Application Link
Start Futrix	Inactive	
End Futrix	Inactive	
Start Futrix Web Call	Inactive	
End Futrix Web Call	Inactive	
User Login (pre)	Inactive	
User Login (post)	Inactive	
User Logout (pre)	Inactive	
User Logout (post)	Inactive	
Change Promotion Level (pre)	Inactive	
Change Promotion Level (post)	Inactive	
Set Custom Libraries (pre)	Inactive	
Set Custom Libraries (post)	Inactive	
Connect to Server (pre)	Inactive	
Connect to Server (post)	Inactive	
Disconnect from Server (pre)	Inactive	
Disconnect from Server (post)	Inactive	
Check State: First Load (pre)	Inactive	
Check State: First Load (post)	Inactive	
Check State: Every Viewpoint (pre)	Inactive	
Check State: Every Viewpoint (post)	Inactive	
Populate Data Model (pre)	Inactive	
Populate Data Model (post)	Inactive	
Query (pre)	Inactive	
Query (post)	Inactive	
Apply Aggregate Level Filters (pre)	Inactive	
Apply Aggregate Level Filters (post)	Inactive	
View Detail Data Query (pre)	Inactive	
View Detail Data Query (post)	Inactive	
Save Dashboard/Viewpoint (pre)	Inactive	
Save Dashboard/Viewpoint (post)	Inactive	
Open Dashboard/Viewpoint (pre)	Inactive	

[OK] [Cancel] [Help]

Prompting Filter Customization

- o Add a new command to let the user set up prompting filters for a given viewpoint
 - Write SCL code for the screen to let the user select dimensions that will need to be prompted for
 - Write SCL code to save the selection with the viewpoint
- o Add the option to pull down menu
- o Add a handle to prompt the user for the filter values before viewpoint is displayed
 - Write SCL code to present a screen to the user where dimension values can be selected and add the filters to the viewpoint



www.futrix.com